



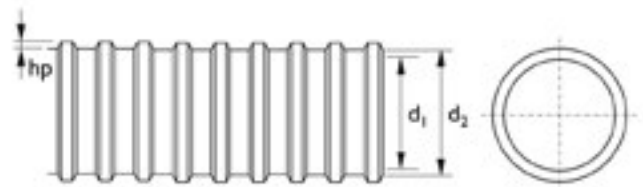
Well Void Tube

Contents

Well Void Tube Round Profile	16-3
Well Void Tube Ovalised Profile	16-4
Seal Caps for Well Void Tube	16-5

Well Void Tube Round Profile

- Mild steel or galvanised finish
- Available in lengths up to 5 metres
- Length tolerance ± 5 mm up to 250 mm internal diameter



Part No.	Internal Diameter d_1	External Diameter d_2	Tolerance	Profiling Depth hp	Weight $\pm 10\%$ kg/m
CFS-WVR-30	30	35	± 0.8	2.5	0.20
CFS-WVR-40	40	46	± 0.8	3.0	0.20
CFS-WVR-50	50	56	± 0.8	3.0	0.34
CFS-WVR-60	60	67	± 0.8	3.5	0.46
CFS-WVR-65	65	72	± 0.8	3.5	0.56
CFS-WVR-70	70	77	± 0.8	3.5	0.57
CFS-WVR-80	80	87	± 0.8	3.5	0.77
CFS-WVR-85	85	92	± 0.8	3.5	0.80
CFS-WVR-90	90	97	± 0.8	3.5	0.95
CFS-WVR-100	100	108	± 1.0	3.8	0.85
CFS-WVR-125	125	133	± 1.0	3.8	1.11
CFS-WVR-150	150	158	± 1.0	3.8	1.28
CFS-WVR-180	180	188	± 1.0	3.6	1.55
CFS-WVR-200	200	208	± 1.0	3.8	1.70
CFS-WVR-250	250	260	± 2.0	4.8	2.24
CFS-WVR-290	290	300	± 2.0	4.8	2.50
CFS-WVR-300	300	310	± 2.0	4.8	2.68
CFS-WVR-310	310	320	± 2.0	4.8	2.80
CFS-WVR-350	350	360	± 2.0	4.8	3.11
CFS-WVR-400	400	410	± 2.0	4.8	3.55

Part No.	Internal Diameter d_1	External Diameter d_2	Tolerance	Profiling Depth hp	Weight $\pm 10\%$ kg/m
CFS-WVR-450	434	450	± 2.5	8.0	5.59
CFS-WVR-500	484	500	± 2.5	8.0	6.22
CFS-WVR-550	534	550	± 2.5	8.0	6.96
CFS-WVR-600	584	600	± 2.5	8.0	7.49
CFS-WVR-650	634	650	± 2.5	8.0	8.12
CFS-WVR-700	685	700	± 2.5	8.0	10.99
CFS-WVR-750	735	756	± 2.5	8.0	11.78
CFS-WVR-800	785	800	± 2.5	8.0	12.58
CFS-WVR-850	835	850	± 2.5	8.0	13.37
CFS-WVR-900	885	900	± 2.5	8.0	14.17
CFS-WVR-950	935	950	± 2.5	8.0	14.96
CFS-WVR-1000	985	1000	± 2.5	8.0	20.16
CFS-WVR-1050	1035	1050	± 3.5	8.0	22.30
CFS-WVR-1100	1086	1108	± 3.5	8.0	24.36
CFS-WVR-1150	1130	1158	± 3.5	8.0	25.48
CFS-WVR-1250	1230	1250	± 3.5	8.0	27.70
CFS-WVR-1350	1330	1350	± 4.0	8.0	30.20
CFS-WVR-1500	1480	1500	± 4.0	8.0	33.28

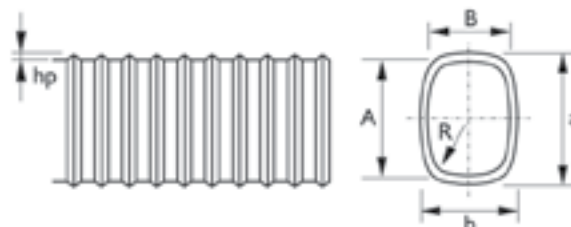
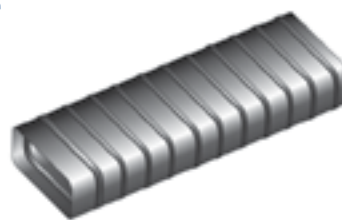
Pull-Out Resistance

The resistance to pull out of these well-void tubes should be considered over the length the tube within to the punching cone of the anchor that is cast into the tube.

Part No	Pull-Out Resistance kN per 100mm length of tube
CFS-WVR-50	21
CFS-WVR-60	25
CFS-WVR-70	29
CFS-WVR-80	33
CFS-WVR-100	35
CFS-WVR-125	44
CFS-WVR-150	52
CFS-WVR-200	70

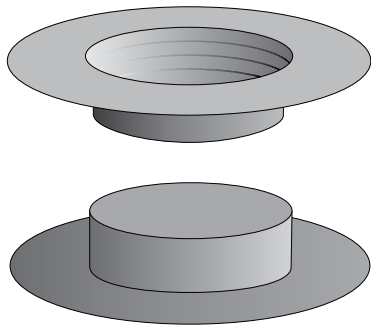
Well Void Tube Ovalised Profile

- Mild steel or galvanised finish
- Available in lengths up to 5 metres
- Length tolerance ± 5 mm up to 250 mm internal diameter

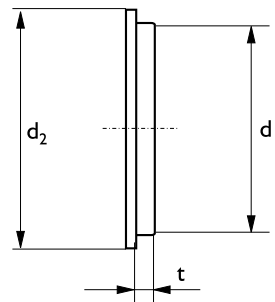


Part No.	Width \times Depth		Tolerance	R ~	Profiling Depth hp	Weight kg/m $\pm 10\%$
	Inner A/B	Outer a/b				
CFS-WVV-32-32	32 \times 32	40 \times 40	± 0.7	7	3.5	0.26
CFS-WVV-41-41	41 \times 41	49 \times 49	± 0.7	7	3.5	0.50
CFS-WVV-50-50	49 \times 49	57 \times 57	± 0.7	7	3.5	0.55
CFS-WVV-60-60	60 \times 60	68 \times 68	± 0.7	7	3.5	0.76
CFS-WVV-57-28	57 \times 28	65 \times 36	± 0.7	7	3.5	0.54
CFS-WVV-70-70	70 \times 70	78 \times 78	± 0.7	7	3.5	0.88
CFS-WVV-70-50	70 \times 50	78 \times 58	± 0.7	7	3.5	0.74
CFS-WVV-70-35	70 \times 35	78 \times 43	± 0.7	7	3.5	0.66
CFS-WVV-80-80	80 \times 80	88 \times 88	± 0.7	7	3.5	1.01
CFS-WVV-77-42	77 \times 42	85 \times 50	± 0.7	7	3.5	0.86
CFS-WVV-90-60	90 \times 60	98 \times 68	± 0.7	7	3.5	1.02
CFS-WVV-100-10	100 \times 100	108 \times 108	± 1.0	8	3.5	1.15
CFS-WVV-100-63	100 \times 63	108 \times 71	± 1.0	8	3.5	1.11
CFS-WVV-102-52	102 \times 52	110 \times 60	± 1.0	8	3.5	0.97
CFS-WVV-130-130	130 \times 130	138 \times 138	± 1.0	8	3.5	1.65
CFS-WVV-130-60	130 \times 60	138 \times 68	± 1.0	8	3.5	1.53
CFS-WVV-138-138	138 \times 138	146 \times 146	± 1.0	8	3.5	1.70
CFS-WVV-140-80	140 \times 80	148 \times 88	± 1.0	8	3.5	1.38
CFS-WVV-160-100	160 \times 100	168 \times 108	± 1.0	8	3.5	1.65
CFS-WVV-160-80	160 \times 80	168 \times 88	± 1.0	8	3.5	1.51
CFS-WVV-200-200	200 \times 200	208 \times 208	± 1.0	8	3.5	2.35
CFS-WVV-200-150	200 \times 150	208 \times 158	± 1.0	8	3.5	1.85
CFS-WVV-200-100	200 \times 100	208 \times 108	± 1.0	8	3.5	1.60
CFS-WVV-230-76	230 \times 76	238 \times 84	± 1.0	8	3.5	1.94

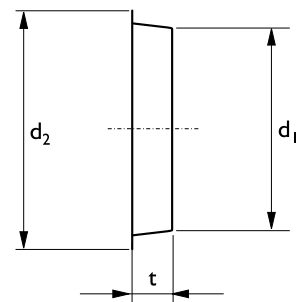
Seal Caps for Well Void Tube



Steel / plastic without rim



Plastic with rim



Part No.	Steel			Plastic			Plastic		
	Internal Diameter d_1	External Diameter d_2	Depth t	Without Rim Internal Diameter d_1	Without Rim External Diameter d_2	Without Rim Depth t	With Rim Internal Diameter d_1	With Rim External Diameter d_2	With Rim Depth t
CFS-WVC-21	-	-	-	21.0	24.5	11.0	-	-	-
CFS-WVC-30	-	-	-	30.0	33.0	10.0	-	-	-
CFS-WVC-40	-	-	-	40.0	45.0	10.5	38	88	15.0
CFS-WVC-50	-	-	-	51.0	56.0	11.0	48	102	15.0
CFS-WVC-55	55	64	8	56.0	63.0	12.0	-	-	-
CFS-WVC-60	60	69	8	61.0	67.5	11.0	-	-	-
CFS-WVC-65	64	74	8	66.0	71.0	12.0	62	122	20.0
CFS-WVC-70	71	77	5	71.0	77.0	11.0	-	-	-
CFS-WVC-75	-	-	-	76.0	80.0	10.5	-	-	-
CFS-WVC-80	79	90	8	81.0	85.0	9.5	77	138	20.0
CFS-WVC-85	84	90	9	86.0	90.0	9.5	-	-	-
CFS-WVC-90	88	99	9	90.0	95.5	9.5	-	-	-
CFS-WVC-100	99	105	11	98.5	102.5	10.0	96	162	20.0
CFS-WVC-120	119	130	11	-	-	-	-	-	-
CFS-WVC-125	124	129	10	123.0	127.0	15.0	122	188	20.0
CFS-WVC-150	149	155	17	147.0	153.0	15.0	147	213	20.0
CFS-WVC-200	200	210	15	199.0	204.0	20.0	193	268	25.0
CFS-WVC-250	250	265	10	249.0	254.0	20.0	247	340	25.0
CFS-WVC-290	290	310	17	-	-	-	-	-	-
CFS-WVC-300	300	320	17	298.0	314.0	23.0	303	408	22.0
CFS-WVC-310	-	-	-	-	-	-	-	-	-
CFS-WVC-350	349	363	18	-	-	-	355	455	21.0
CFS-WVC-400	384	400	19	-	-	-	406	510	32.0
CFS-WVC-450	434	450	19	-	-	-	-	-	-
CFS-WVC-500	483	500	20	-	-	-	-	-	-
CFS-WVC-550	535	550	20	-	-	-	-	-	-

